



XRP LEDGER  
**LICENSE**

Version 1.0  
Date: 08.03.2026

# LICENSE

Site 1: Purpose of This Whitepaper

Site 2: Background and Objectives

Site 3: The Platform

Site 4: Token Classification & Utility

Site 5: Governance Framework

Site 6: Buy-&-Burn Mechanism

Site 7: Tokenomics

Site 8: IDO

Site 9: Roadmap

Site 10: License Types

Site 11: Transaction Workflow

Site 12: Executive Summary

Site 13: Why XRP Ledger

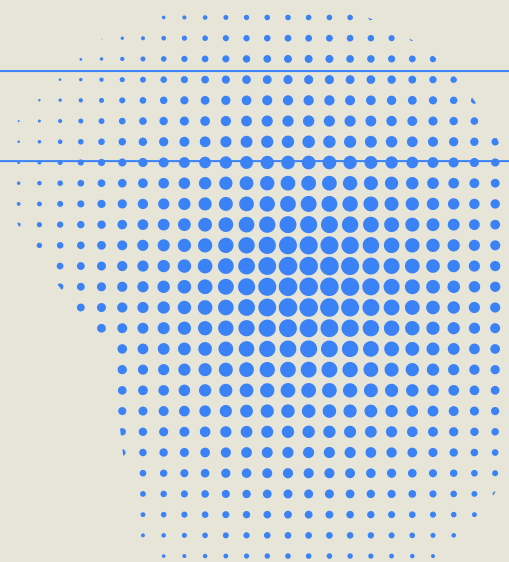
Site 14: Platform Boundaries and Responsibilities

Site 15: Data Privacy and User Control

Site 16: FAQ

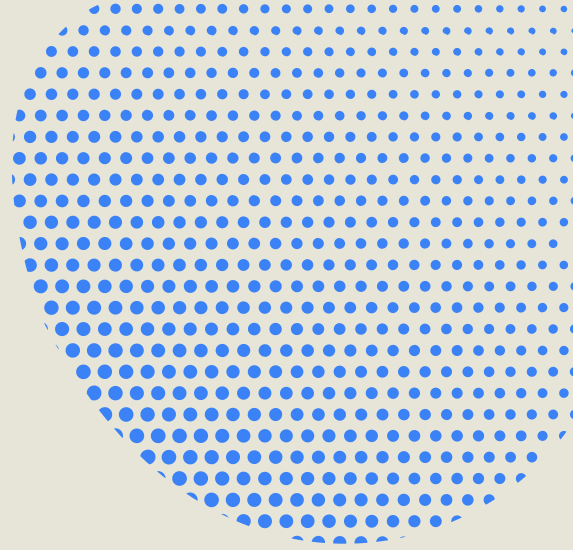
Site 17: Risk Factors

# CONTENTS



LICENSE

# PURPOSE OF THIS WHITEPAPER



This whitepaper outlines the concept, structure, and functionality of xrplce.com, a decentralized platform designed to enable NFT-based content licensing on the XRP Ledger.

It explains the role of the License (LCE) Token within the ecosystem, its functional utility, and the principles guiding governance and token supply management.

This document is intended to provide clarity and transparency for all participants: content creators, buyers, and platform users.

## DISCLAIMER

This document is provided for informational purposes only.

**It does not constitute** investment advice, a public offering of financial instruments, or an invitation to acquire assets.

**The License (LCE) Token** is not an investment product, not a security, and does not grant any right to profits, dividends, or financial returns.

# BACKGROUND AND OBJECTIVES

The digital content licensing ecosystem is characterized by:

- Inefficient licensing processes
- lack of transparency
- Complex legal agreements
- Difficulty monetizing digital work

xrplce.com is designed to address these challenges by providing:

- Blockchain-verified ownership
- Instant XRP payments via XRPL
- Public listing of available licenses
- Verifiable, transferable license NFTs

The platform is built with a long-term perspective, focusing on sustainable, transparent, and efficient content licensing rather than short-term speculation.

LICENSE

# THE PLATFORM

## 3.1 Target Groups

The platform serves two primary user groups:

<b>CREATORS</b>	Content creators who want to license their digital work (images, videos, audio, documents, code, designs) in a transparent and automated manner.
<b>BUYERS</b>	Individuals and companies seeking licensed content for commercial or personal use with blockchain-verified ownership.

## 3.2 Platform Functionality

### Registration & Profiles

- Creators and buyers connect via XRPL wallet (Xaman)
- Creators can list works for licensing with customizable terms

### NFT Licensing System

- Each license is minted as an NFT on XRPL (XLS-20 standard)
- Transactions are instant and transparent on-chain
- License terms (commercial/personal use, duration, restrictions) are embedded

### Payment & Verification

- All payments in XRP (native XRPL token)
- Instant transaction verification via XRPL
- Optional referral system with on-chain commission tracking

# 4. TOKEN CLASSIFICATION & UTILITY

The License (LCE) Token is a functional utility and governance token on the XRP Ledger

## The token:

- is not a means of payment,
- does not grant ownership or participation rights,
- does not entitle holders to revenues or profits,
- is not a financial investment.

The token exists solely to support non-financial functionality within the platform ecosystem.

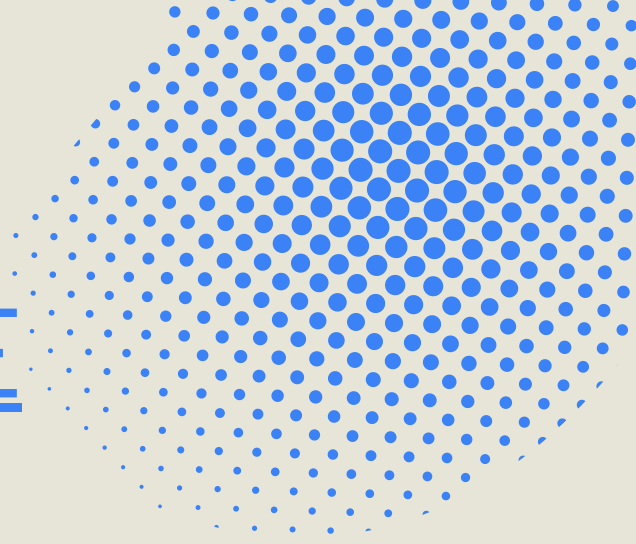
## Token Utility

The LCE token may be used for:

- Vote on platform feature prioritization
- Provide feedback on policy changes
- Participate in non-binding community decisions
- Early access to new marketplace categories
- Advanced analytics for creators
- Priority support

Token utility may change over time and may be expanded, modified, or discontinued. There is no entitlement to any specific or permanent utility.

# GOVERNANCE FRAMEWORK



## **Governance within xrplc.com refers to:**

- structured community participation,
- transparent feedback mechanisms,
- non-binding decision-making processes.

## **Governance Does NOT:**

- Create economic or legal rights
- Provide legally binding control
- Grant ownership of the platform

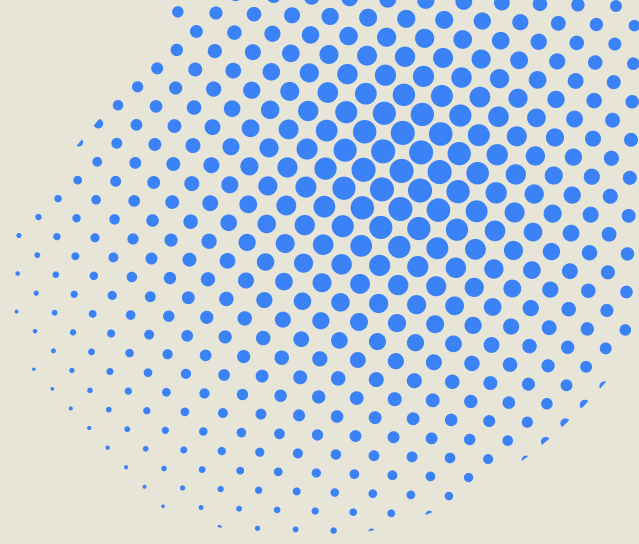
## **Governance Does NOT:**

- Influence feature prioritization
- Provide input on marketplace categories
- Suggest improvements to user experience

## **Operational responsibility remains with the platform operators.**

The governance framework encourages constructive participation and community alignment while maintaining clear operational control for platform sustainability.

# BUY & BURN MECHANISM



The platform may, in certain situations, acquire LCE tokens on the market and permanently remove them from circulation ("Buy & Burn").

## **Buy-&-Burn serves exclusively to:**

- Manage token supply responsibly
- Support long-term ecosystem balance
- Align circulating supply with actual platform utility

## **Such actions may be funded from:**

- Platform listing fees (5 XRP per work)
- Optional premium feature revenues
- General platform resources

## **Buy-&-Burn explicitly does NOT represent:**

- A financial distribution
- A profit-sharing mechanism
- A dividend
- A promise of returns

## **There is:**

- NO fixed ratio
- NO entitlement
- NO regular schedule

Buy-&-Burn is **discretionary, optional, and may be modified, suspended, or terminated at any time.**

LICENSE

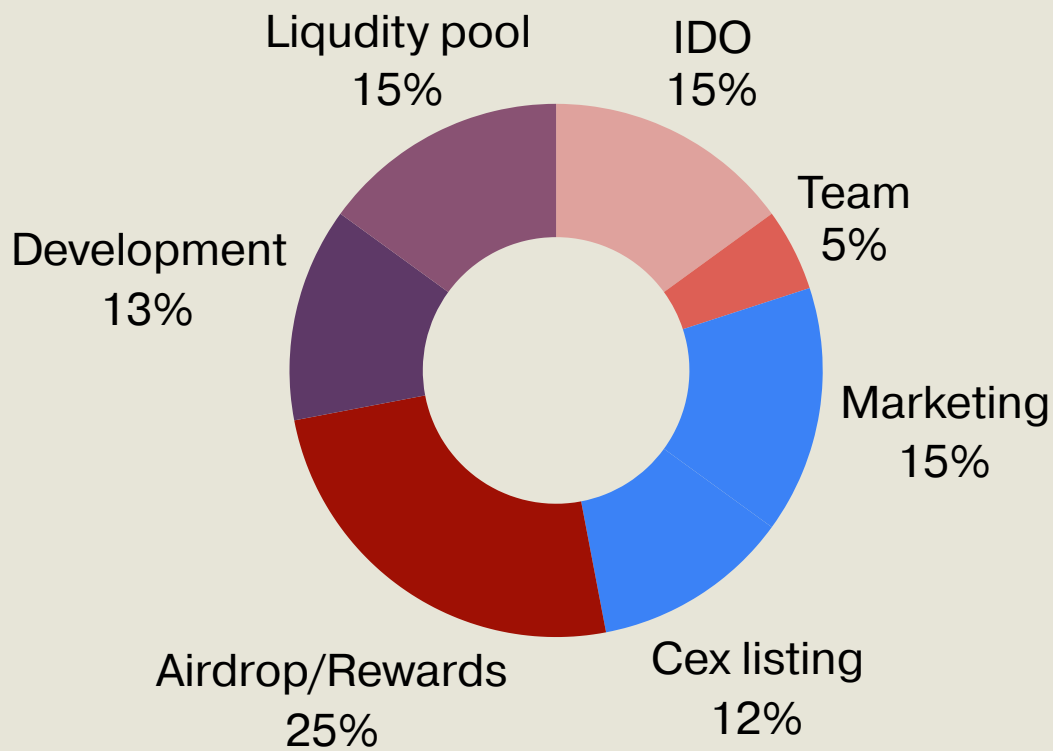
# TOKENOMICS

The total supply of the License (LCE) Token is fixed at:

**50,000,000 tokens**

No additional tokens beyond this maximum supply will ever be created.

**The total token supply is allocated as follows:**



LICENSE

# IDO – INITIAL DEX OFFERING

## IDO Overview:

- **Token:** License (LCE)
- **IDO Token Allocation:** 7,500,000 tokens
- **IDO Price:** 0.03 XRP per token
- **Total IDO Size:** 225,000 XRP
- **Type:** Public IDO
- **Platform:** XRP Ledger (native DEX via trustlines)

## Treatment of Unsold Tokens

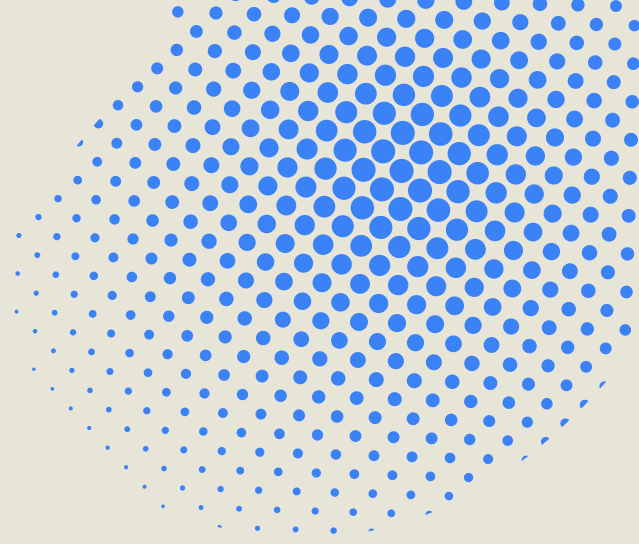
Tokens that are **not sold during the IDO** may, after completion, be **permanently removed from circulation (burned)**.

This measure serves solely to:

- Align circulating supply with actual demand
- Maintain a transparent and consistent token structure
- Avoid artificial supply inflation

Participation NOT RECOMMENDED for residents of EU, USA, or UAE. If you participate from these jurisdictions, you do so at YOUR OWN RISK AND RESPONSIBILITY. The team bears NO LIABILITY for any regulatory or legal consequences.

# ROADMAP



- ## 01 | Phase 1

  - Creation of License (LCE) Token on XRP Ledger
  - Setup of official communication channels
  - Domain acquisition
  - Publication of core project information and whitepaper
  
- ## 02 | Phase 2

  - Design and development of NFT licensing marketplace
  - User wallet integration
  - License NFT minting system
  - Public launch of the platform
  - Public beta launch
  - IDO
  
- ## 03 | Phase 3

  - Onboarding first creators and buyers
  - Facilitation of first license transactions
  - Advanced search and filtering
  - Facilitation of first collaborations
  - Potential CEX listings for LCE token
  
- ## 04 | Phase 4

  - Continuous platform optimization based on user feedback
  - Strategic partnerships (content platforms, creator tools)
  - Long-term operational sustainability planning
  - Governance framework activation

This roadmap is subject to change and does not represent strict goals or commitments. All timelines and features may be modified, delayed, or cancelled at any time without notice.

Tokens that are **not sold during the IDO** may, after completion, be **permanently removed from circulation (burned)**.

# LICENSE TYPES

The platform supports various license formats:

## Commercial Licenses

- Usage rights for commercial purposes (advertising, products, websites)
- Royalty-free or royalty-based models
- Specified usage duration (perpetual or time-limited)

## Personal Licenses

- Non-commercial usage rights
- Lower pricing for personal projects
- Clear restrictions on commercial use

## Exclusive Licenses

- Single-buyer exclusivity
- Higher pricing for exclusive rights
- Removal from marketplace after purchase

## Custom Licenses

- Creators can define custom terms
- Flexible pricing and usage rights
- Negotiable conditions between creator and buyer

**The platform does NOT guarantee enforcement of license terms** – this remains the responsibility of creators and buyers under applicable copyright law.

# TRANSACTION WORKFLOW

## For Creators:

1. **Connect Wallet** – Use Xaman
2. **List Work** – Create marketplace listing with license terms
3. **Set License Terms** – Define usage rights, pricing, restrictions
4. **Pay Listing Fee** – 5 XRP to list work on marketplace
5. **Mint Master NFT** – Create proof-of-authorship NFT
6. **Await Purchase** – Work becomes visible to buyers

## For Buyers:

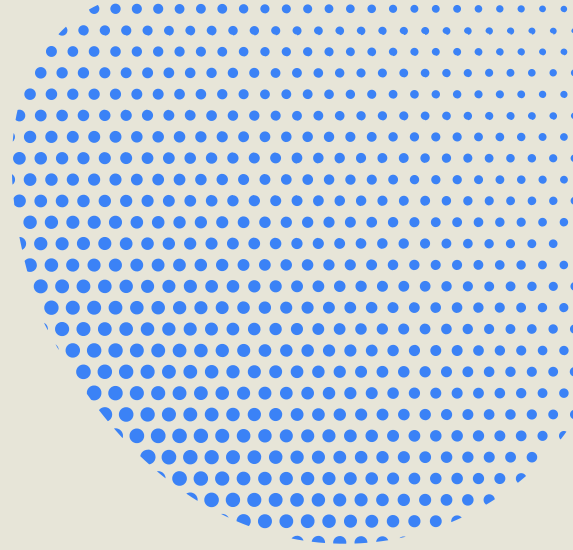
1. **Connect Wallet** – Use Xaman
2. **Browse Marketplace** – Search and filter available works
3. **Select License** – Choose work and license type
4. **Initiate Payment** - Scan QR
5. **Transaction Verification** – Platform verifies payment on-chain
6. **Receive License NFT** – NFT minted and sent to buyer's wallet
7. **License Ownership** – NFT proves legitimate license ownership

## Platform Role:

- **Facilitation** – Provides marketplace infrastructure
- **Verification** – Confirms XRPL transactions
- **NFT Minting** – Creates and transfers license NFTs
- **Does NOT act as contracting party** – Agreements are between creator and buyer

LICENSE

# EXECUTIVE SUMMARY



**xrplce.com** is a decentralized NFT licensing marketplace built on the XRP Ledger, enabling transparent, instant, and verifiable content licensing.

## Platform Role:

- **NFT-based licenses** – Blockchain-verified ownership
- **Instant XRP payments** – No intermediaries or delays
- **Transparent marketplace** – Public, searchable, filterable
- **Creator-first model** – Direct monetization without middlemen
- **Verifiable ownership** – License NFTs on XRPL

## Token Role:

**The License (LCE) Token** complements the ecosystem as a **functional participation and governance tool** for optional features and non-binding community decisions.

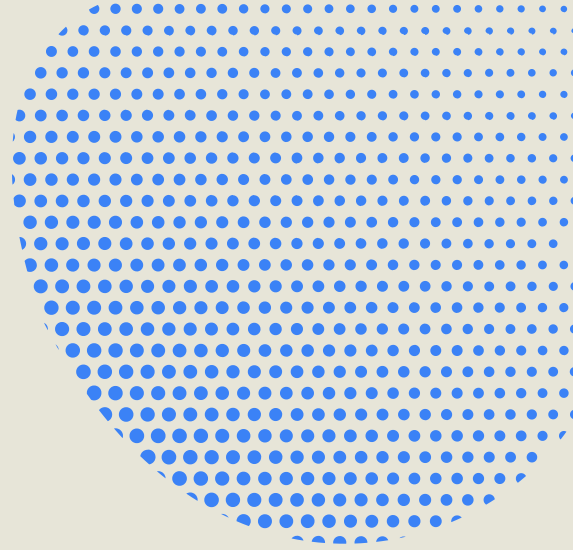
**It is NOT a financial product** and does NOT grant ownership, profit rights, or investment returns.

## Buy-&-Burn:

To support ecosystem balance, **discretionary buy-and-burn measures** may be applied. These are **optional, non-automatic, and solely for responsible supply management** – NOT for financial returns.

LICENSE

# WHY XRP LEDGER



xrplce.com is built on the **XRP Ledger (XRPL)** due to its unique advantages for NFT licensing:

## Fast & Low-Cost Transactions

- **3-5 second settlement** – Instant payment verification
- **Minimal fees (< \$0.01)** – No barrier to micropayments
- Enables seamless user experience without transaction delays

## Native NFT Support (XLS-20)

- Built-in NFT standard – No smart contract complexity
- Proven, audited, and secure NFT functionality
- Lower technical risk compared to smart contract platforms

## Mature & Stable Network

- **10+ years of operation** – Battle-tested reliability
- High uptime and security
- Established ecosystem and tooling

## Decentralization & Censorship Resistance

- No central authority controlling transactions
- Permissionless – anyone can participate
- Transparent on-chain verification

**XRPL provides the ideal foundation** for a transparent, fast, and cost-effective NFT licensing marketplace.

LICENSE

# PLATFORM BOUNDARIES AND RESPONSIBILITIES

xrplce.com operates as a **facilitation and coordination platform** and does NOT act as:

- An agency
- An employer
- A financial intermediary
- A legal representative for users

## **Platform Role:**

The platform provides tools to support:

- Discovery of licensable content
- Marketplace listing and search functionality
- Transaction verification on XRPL
- NFT minting and transfer

## **User Responsibilities:**

Users (creators and buyers) are solely responsible for:

- Complying with applicable copyright and licensing laws
- Ensuring they have the right to license uploaded content
- Honoring agreed license terms
- Resolving disputes independently

LICENSE

# DATA PRIVACY AND USER CONTROL



Protecting user data and ensuring user control are key priorities of License.

The platform follows a clear separation approach between platform data and blockchain infrastructure. Sensitive personal data is not stored on-chain and is processed only to the extent necessary for platform operation.

Token usage does not require the disclosure of personal information. Wallet addresses are used solely for technical interaction with the token and are not inherently linked to user identities.

Users retain full responsibility and control over their accounts, wallets, and interactions. License does not access private keys and does not provide custodial services.

Data processing is conducted in accordance with applicable data protection regulations. Further details regarding the scope and purpose of data processing are provided in separate privacy policies.

# FREQUENTLY ASKED QUESTIONS

→ ***Is the LCE token an investment or financial product?***

No. The token is a functional utility and participation tool. It is not a financial instrument and does not represent an investment.

→ ***Do I need to buy the token to use the platform?***

No. Core platform features are available without token ownership. The token is required only for optional features and participation mechanisms.

→ ***What happens to tokens that are not sold during the IDO?***

Unsold tokens may be permanently removed from circulation (burned) for organizational and structural reasons. This does not create any entitlement or economic expectation.

→ ***How are license payments handled?***

All payments are made directly in XRP from buyer to creator via XRPL. The platform does NOT custody funds – transactions are peer-to-peer on-chain.

LICENSE

# RISK FACTORS

The use of the platform and the token involves risks, including but not limited to:

- regulatory changes,
- technical failures or security vulnerabilities,
- reduced or discontinued token utility,
- operational risks related to platform management.

Users assume these risks at their own responsibility.

## Legal Disclaimer

This whitepaper does not constitute:

- an offer of securities,
- investment advice,
- financial or legal advice.

Users are solely responsible for assessing the legal and regulatory requirements applicable in their respective jurisdictions.

By purchasing LCE tokens, you AUTOMATICALLY AGREE that you have read and accepted this entire whitepaper, including all terms, conditions, risks, and disclaimers. No separate signature required.

Token purchase = full legal acceptance.

Team may disband project at any time without refunds or notice.

**This whitepaper may be amended, updated, or replaced at any time.**

**There is no entitlement to the continued availability of any specific content.**